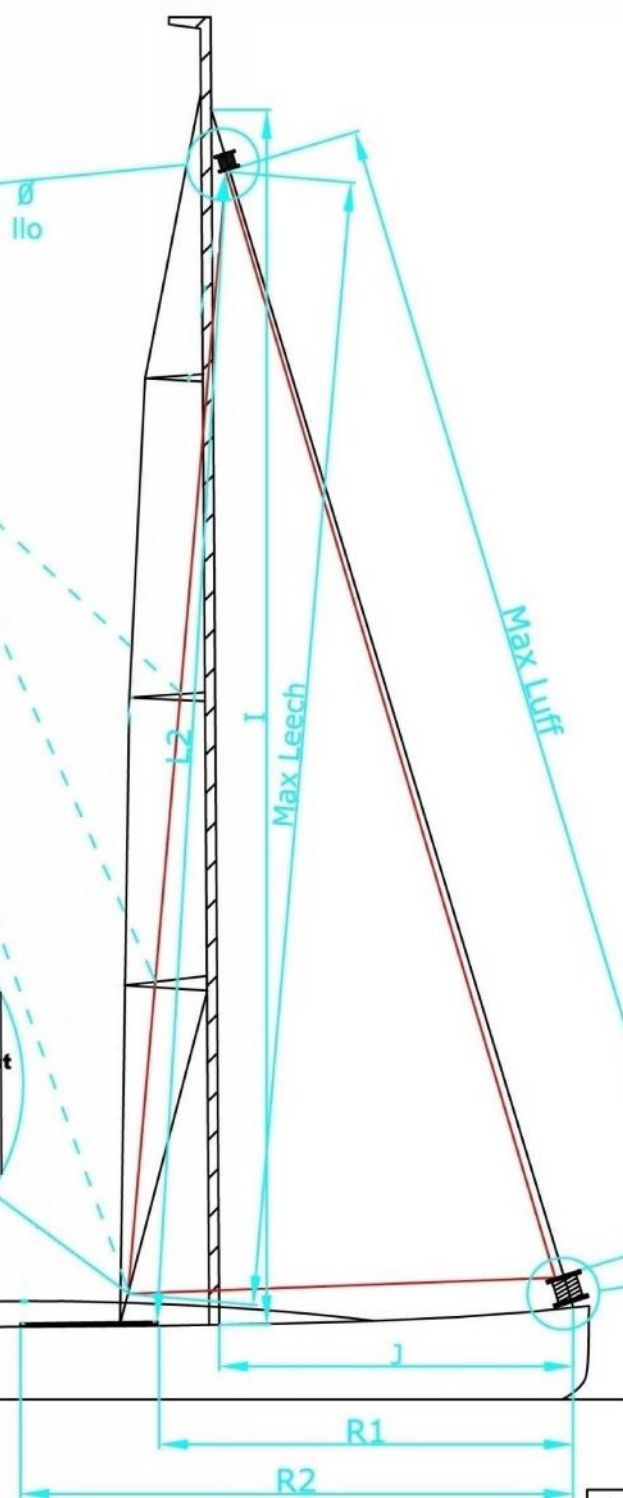
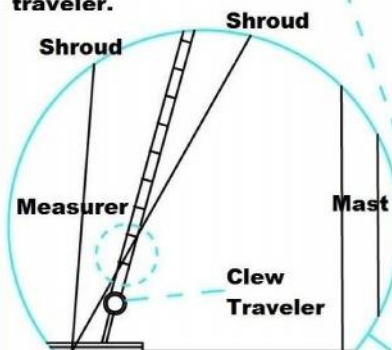


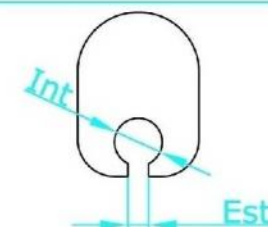
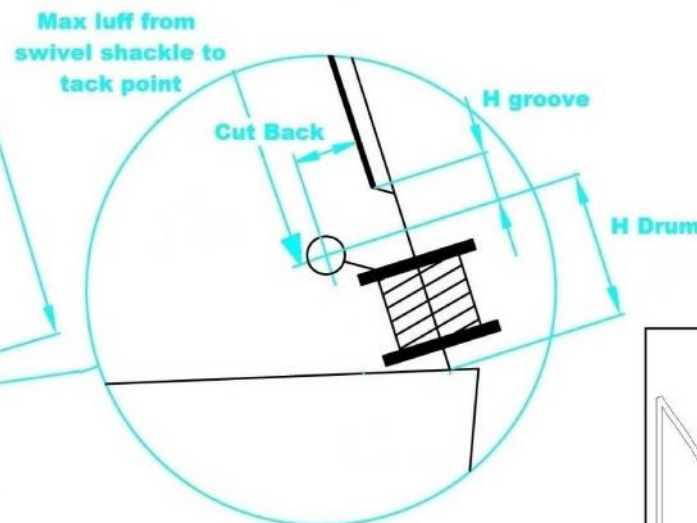


Measuring max leech:
 Fix the measurer edge to the swivel shackle and hoist the jib halyard to the top. Place the measurer towards the jib track until the measurer slightly touches spreaders and/or the lower diagonal shroud. Then place the traveler on that point and measure from the swivel shackle to the upper part of the clew traveler.



Max Luff	
From swivel shackle to tack point	
Max Foot	
From tack point to clew traveler	
R1	
Forestay fixing point - front track end	
R2	
Forestay fixing point - back track end	
Cut Back	
From tack point to luff groove	
Max Leech	
From swivel shackle to clew traveler	
H Drum	
From tack point to forestay fixing point	
H Groove	
From tack point to luff groove	

UV Band
 Left ☐ clockwise closing
 Right ☐ counterclockwise closing



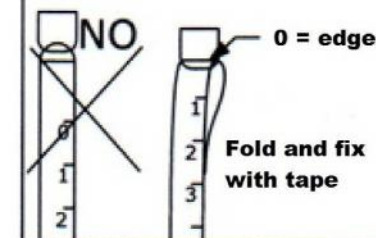
Int	
Est	
I	
J	

When measuring the max leech, the measurer touches:

- ☐ the lower shroud but not the lower spreader
- ☐ the lower shroud and the lower spreader

How to use the measurer

Dimensions has to be reported from the 0. If the 0 is not coinciding with the edge, fold the measurer on itself until the 0 lays on the edge and fix it with some tape.



B SAILS

Furling Jib Form